



PORTLAND PUBLIC SCHOOLS

Architectural/Engineering Diligence


- Created Pre-Design Diligence RFPs / Interview Questions
- Advertised RFPs / Short-List for Interviews
- Interviews / Evaluations
- Selection / Contract Negotiation / Board Approval
- Internal Kick-Off Meeting with District Teams
- Site Walks with Engineers
- External (MPC) Re-Engagement Meetings



PORTLAND PUBLIC SCHOOLS


Cost Estimating Diligence

- Created Pre-Design Diligence Scope of Work
- Proposal Solicitation
- Contract Negotiation
- Internal Kick-Off Meeting with District Staff
- External Kick-Off Meeting with Architectural and Engineering Firms
- Site Tour of Kellogg
- EHS Scopes of Work Turnover

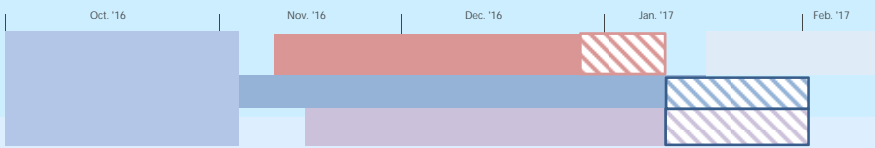
 PORTLAND PUBLIC SCHOOLS

Master Plan Committees

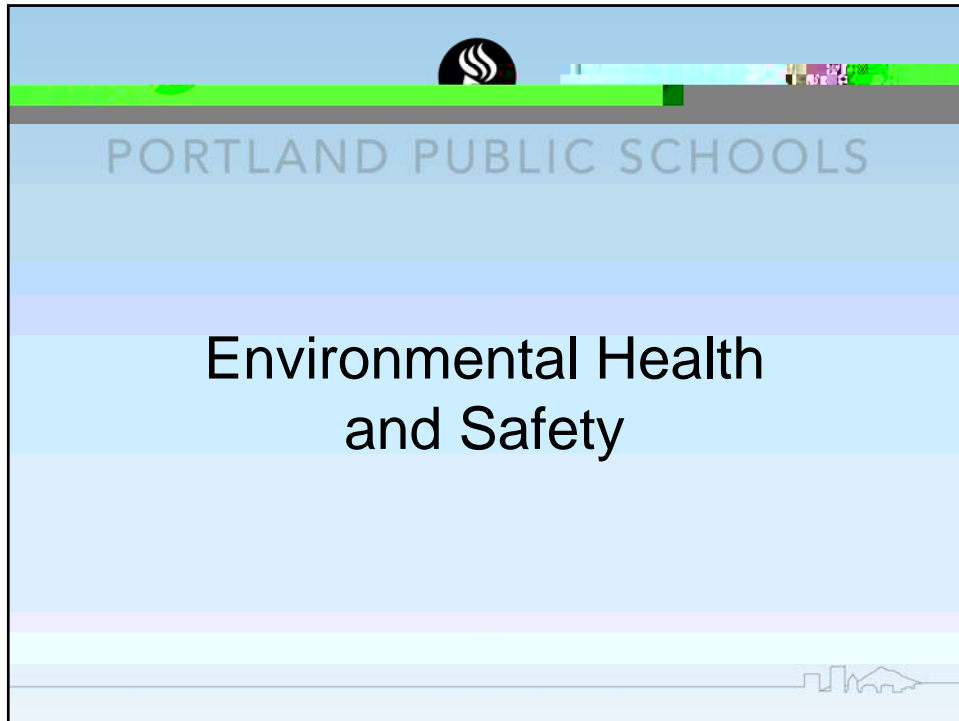
- Re-Engaged Site Principal/Co-Chairs of MPCs
- Established Dates/Times for Meetings
- Posted to the District Web Site
- Benson – 11/3/16, 12/8/16, 1/5/17
- Madison – 11/15/16, 12/5/16, 1/9/17
- Lincoln – 12/7/16, 1/11/17
- Kellogg – 11/15/16, 11/16/16 (Internal)

 PORTLAND PUBLIC SCHOOLS

Timeline for Refined Master Plan Scope and Cost Analysis



Month	Phase 1 (Blue)	Phase 2 (Red)	Phase 3 (Purple)	Phase 4 (Hatched)
Oct. '16	Active	Inactive	Inactive	Inactive
Nov. '16	Active	Active	Active	Inactive
Dec. '16	Active	Active	Active	Inactive
Jan. '17	Inactive	Active	Active	Active
Feb. '17	Inactive	Inactive	Active	Active

This slide features the Portland Public Schools logo and name at the top left. The main title "Environmental Health and Safety Department Gap Analysis" is centered in a bold, black font. Below the title is a bulleted list of three main points, with the second point having two sub-points. The slide has a light blue background with horizontal bands of varying shades. A small school building icon is visible at the bottom right.

- Operations is in the process of conducting a gap analysis for the existing Environmental Health and Safety (EHS) department.
- Preliminary results indicate that EHS should oversee between 50 and 55 environmental health and safety programs, including:
 - water quality
 - lead-based paint remediation
- The gap analysis is operational in nature and focuses on how we manage risk vs. our bond analysis which focuses on to what extent capital improvements are needed to mitigate existing risks.
-

Environmental Health and Safety Hazards Focus List

The following safety areas were identified for further review / analysis based on an assessment of risk and feedback received from PPS board. They are not listed in any particular order.

- Water Quality
- Lead-Based Paint
- Asbestos
- Seismic
- Playgrounds
- Roofs/Building Envelopes/
Foundations (air quality)aint•

Cost Analysis Methodology

Current Reporting and Prior Studies
examples:

-



PORTLAND PUBLIC SCHOOLS

Portland School District 11
 General Obligation Bonds - 2012 Authorization
 \$482.0 million General Obligation Bonds

Principal	Total	Fiscal	Assessed	AV	Percent	Actual Levy	ACTUAL			PROJECTED					
							Principal	Interest	Levy	Principal	Interest	Levy			
						0	2015	\$ 40,720,094							
						1	2016	42,244,715	3,740						
						2	2017	43,769,330	7,480						
						3	2018	45,293,945	11,220						
						4	2019	46,818,560	14,960						
						5	2020	48,343,175	18,700						
						6	2021	49,867,790	22,440						
						7	2022	51,392,405	26,180						
						8	2023	52,917,020	29,920						
						9	2024	54,441,635	33,660						
						10	2025	55,966,250	37,400						
						11	2026	57,490,865	41,140						
						12	2027	59,015,480	44,880						
						13	2028	60,540,095	48,620						
						14	2029	62,064,710	52,360						
						15	2030	63,589,325	56,100						
						16	2031	65,113,940	59,840						
						17	2032	66,638,555	63,580						
						18	2033	68,163,170	67,320						
						19	2034	69,687,785	71,060						
						20	2035	71,212,400	74,800						
						21	2036	72,737,015	78,540						
						22	2037	74,261,630	82,280						
						23	2038	75,786,245	86,020						
						24	2039	77,310,860	89,760						
						25	2040	78,835,475	93,500						

Interest Rate Assumptions: Dated Date: Premium: Total Funds Paid: Sale:




PORTLAND PUBLIC SCHOOLS

November

INTERNAL PLANNING & RAMP UP EXTERNAL COMMUNICATIONS

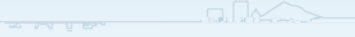
- Board bond work session
 - Preview what information will be available when and how public can provide input
- Continued assessments, cost estimating, and due diligence on Environmental Health & Safety and High School Modernization projects


 PORTLAND PUBLIC SCHOOLS

January

DRAFT BOND PACKAGE PROJECT LIST & PUBLIC INPUT

- (mid-January) Draft bond package, including:
 - o School Modernization cost estimates
 - o EH&S priorities and cost estimates
- Superintendent's Bond Advisory Committee reviews draft bond package
- Community engagement on draft bond package
 - o Town Hall meetings
 - o Additional opportunities for public input
 - o Districtwide public opinion survey on package and timing
- Draft ballot title and explanatory statement



 PORTLAND PUBLIC SCHOOLS

